



RPM Monitors



RPM MONITOR

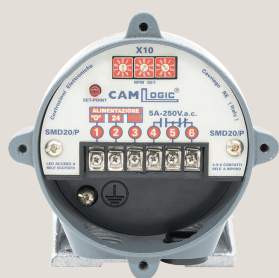
SMD20

Product Line: RPM Monitors

The SMD20 digital speed monitor ensures the monitoring of the rotation speed of any rotating shaft. The sensor closes a contact when the set speed is not respected. Version with direct connection. The CAMLogic digital speed monitor can be mounted in any position.


ADVANTAGES

- An **EASY TO INSTALL** instrument that does not require any maintenance or specific tool for its installation.
- Extremely **SIMPLE** controlled RPMs configuration, by setting a value between 1 and 999.
- CAMLogic RPM Monitor SMD20 is a **FLEXIBLE** tool that can be installed in any position. It can work from 1 to 2800 RPM.
- **CUSTOMIZABLE** with flange connection, support bracket, in a variant for contact with conveyor belt and with display for direct visual control of the RPMs. Also available with connection coupling made for high temperatures up to 120°C.
- **DURABLE** and **RELIABLE** with aluminium casing, stainless steel shaft on ball bearings. Works with ambient temperatures from -15° to +60°C.



 **ATEX
DUST ZONE 21**

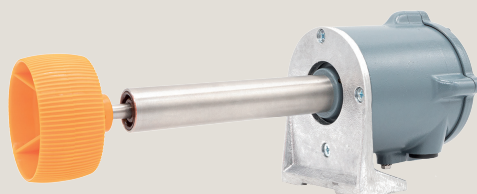
 **European Union
Conformity**

 **United Kingdom
Conformity**

AVAILABLE VERSIONS



SMD20P
Digital inductive
rpm monitor



SMD20VN
Conveyor belt
version

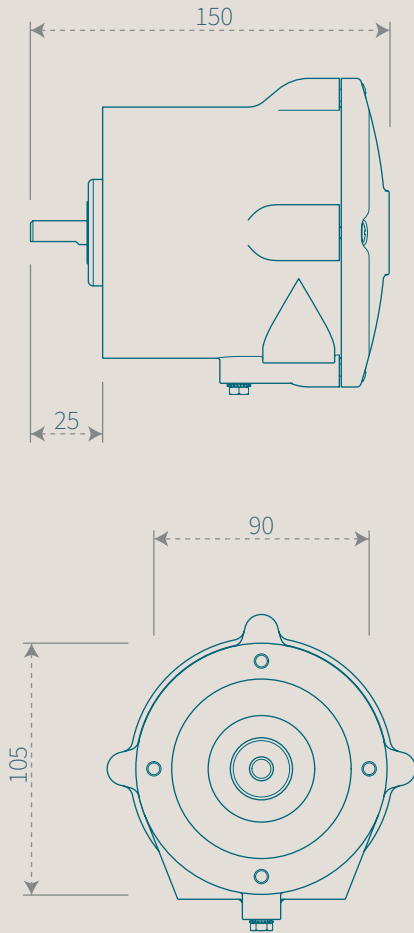
RPM MONITOR

SMD20



RPM Monitors

Product Line: RPM Monitors



Customizations



115/230V AC



24/48V AC



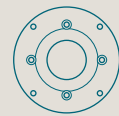
24V DC



Digital display



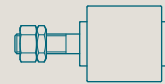
Aluminium bracket



Aluminium flange



Actuator
(for **SMD20P**)



Connection join
(for **SMD20**)

